

# SPECIAL FIBERED ANTI-LEAK AT 1 KG DATA SHEET

# Natirel

pinturas

## Definition

### Waterproofing:

This product is a paint made from a highly elastic resin for the protection and waterproofing of porous construction surfaces.

## Recommended Uses

- Applicable on plaster, cement, brick, etc.
- Protection and waterproofing of porous surfaces.
- For both exterior and interior use.
- Waterproofing and protection of outdoor surfaces.

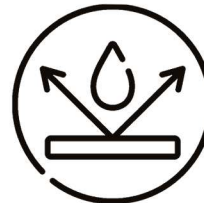
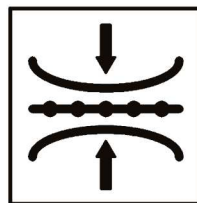
## Properties

- Waterproof and leaf-proof.
- Good adhesion to construction supports.
- Excellent elasticity.
- Impact-resistant and walkable.
- Easy to detect faults.
- Does not accumulate weight on the structure.
- Avoids risks as it is a water-based product.
- Avoids construction work. Excellent support for tiles.
- Resistant to the passage of time.
- Meets watertight standards.
- Dries by evaporation.



## Tecnical Characteristics

Nature: Styrene-acrylic dispersions.  
Appearance: Semi-matte.  
Texture: Fine and elastic.  
Colour: White, red, grey, and green.  
Pigments: Titanium Dioxide and inorganic pigments with maximum weather resistance.  
Specific weight:  $1.28 \pm 0.03 \text{ kg/l}$ .  
Volatile organic compounds (VOC):  $11.90 \text{ g/l}$ .  
Washability: Class 1 (UNE-EN 13300).  
Vertical Surfaces:  $0.75 \text{ l/m}^2$  (approx. 2-3 coats).  
Horizontal Surfaces:  $1.5 \text{ l/m}^2$  (approx. 3-4 coats).  
Drying time (  $20^\circ\text{C}$  RH: 60%): To the touch: 2-4 Hrs.  
Certified by Geocisa. Report No. 2014/172-1  
Fibre Percentage: Approx. 50 grams per litre.





### Application systems

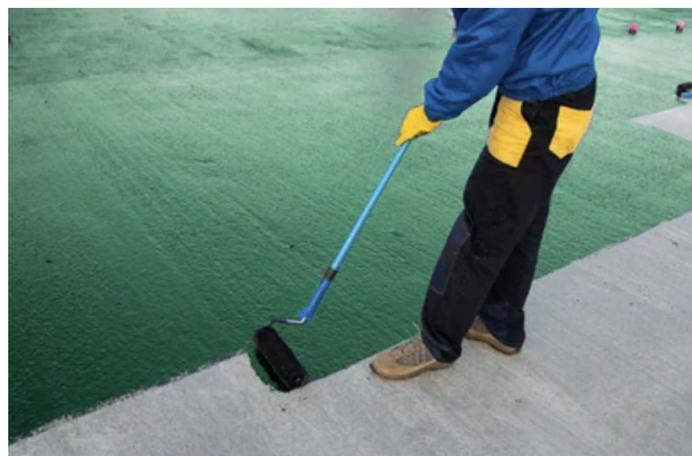
- Thinner: Water.
- Tools/Thinning:
  1. Brush 0-5% max.
  2. Roller: 0-5% max.
  3. Spray gun: 0-15% max.
  4. Low pressure turbo: 0-15% max.
  5. Airless: 0-5% max.
  6. Air mix: 0-10% max.
- Repainting (20°C, RH 60%):  
Minimum: 24 Hrs.  
Maximum: None.
- Cleaning: Use water to clean immediately after use.

### Preparation of New Substrates

- Cement mortar: Wait until completely set (30 days min.). Clean the substrate of any efflorescence using an abrasive blasting agent, and neutralise alkaline surfaces. On excessively polished surfaces, sand to open the pores. Secure loose substrates with a suitable fixative. Clean the substrates of any foreign matter and/or residue.
- Plaster: Wait until completely dry (max. 20% humidity). Remove any foreign matter and/or residue from the substrate. Remove efflorescence. Regulate surface absorption using a sealing primer or matte paste. On excessively polished surfaces, sand to open the pores. Secure loose or floury substrates with a suitable fixative.

### Restoration and Maintenance

1. Completely remove old paint in poor condition or poorly adhered.
2. Glossy surfaces must be matted to ensure good adhesion.
3. On painted surfaces, the paint's strength and adhesion must be checked, its nature diagnosed to avoid possible incompatibilities.
4. Fill any defects in the surface with plaster.
5. On mouldy walls, pretreat with fungicide.
6. Recommended consumption on already waterproofed surfaces:
  - 1st coat 1 l/m<sup>2</sup>.
  - 2nd coat 1 l/m<sup>2</sup>.



### Application

- Clean the surface by removing all types of dirt, moss, mould, etc., and wash with clean, uncontaminated water.
- Shake the product until completely mixed.
- Dilute the product slightly according to the porosity and condition of the surface in the first coat.
- It is advisable to place an 80g/m<sup>2</sup> gridded fibreglass mesh immediately after application.
- Finish in several coats until the recommended amount is applied.
- It is very important that the application and substrate temperature to be above 5°C.





#### General Observations

- The product is designed to waterproof the substrate by applying it between the moisture and the surface to be protected.
- Avoid applying the product on unstable days with a risk of rain.
- Use clean, uncontaminated water to dilute the product.
- Use suitable fillers outdoors.
- The gridded fiberglass mesh must adapt to the substrate, leaving gaps in the expansion joints. The recommended coverage for horizontal surfaces is 2 l/m<sup>2</sup> applied in a minimum of 3-4 coats. Do not store the diluted product.
- Avoid exposing containers to both high and low temperatures.
- Maximum recommended storage time: 30 months from manufacturing in its original, perfectly closed container, under cover, and at temperatures between 5 and 35°C.
- In unfavorable weather conditions, it is preferable to apply the product in a greater number of coats.
- For preservation, it is advisable to avoid adding water to the product that will not be used in the application. Consult and follow the application regulations.

#### Safety and Hygiene - Environmental Protection

- Do not eat, drink, or smoke during application.
- In case of contact with eyes, rinse with plenty of clean water.
- Toxic if swallowed.
- Keep out of reach of children.
- Do not pour waste down the drain.
- Store the product in a dry area.

#### Note

- All substances used in our formulations comply with REACH regulations.

The data presented here are based on our current knowledge, laboratory tests, practical use in specific circumstances, and objective judgments. Due to the impossibility of establishing a description appropriate to each nature and condition of the different backgrounds to be painted, it is impossible for us to guarantee total reproducibility in each specific use. Since they are outside of the company's control, neither the manufacturer nor the seller assume any duty for the outcomes, damages, etc. that may occur in applications carried out in accordance with our suggestions, unless expressly agreed in writing. Given the constant evolution of technology, it is our customers' responsibility to inform themselves before beginning a job that this data sheet has not been modified by a more recent edition. This data sheet cancels and replaces any previous data sheet relating to the same product.

